



**Lithgow
arms™**



**TOUGH
ACCURATE
RELIABLE**



Crossover™

OWNERS MANUAL

www.LithgowArms.com

LITHGOW ARMS BATTLE PROVEN SINCE 1912



*sight not included

About Lithgow Arms

Lithgow Arms is a brand built on over 100 years of weapons expertise at the small arms factory in Lithgow, NSW. Australian troops have carried firearms made at Lithgow into all conflicts and wars since World War 1 — from Gallipoli, North Africa, Kokoda and Vietnam to East Timor and Afghanistan.

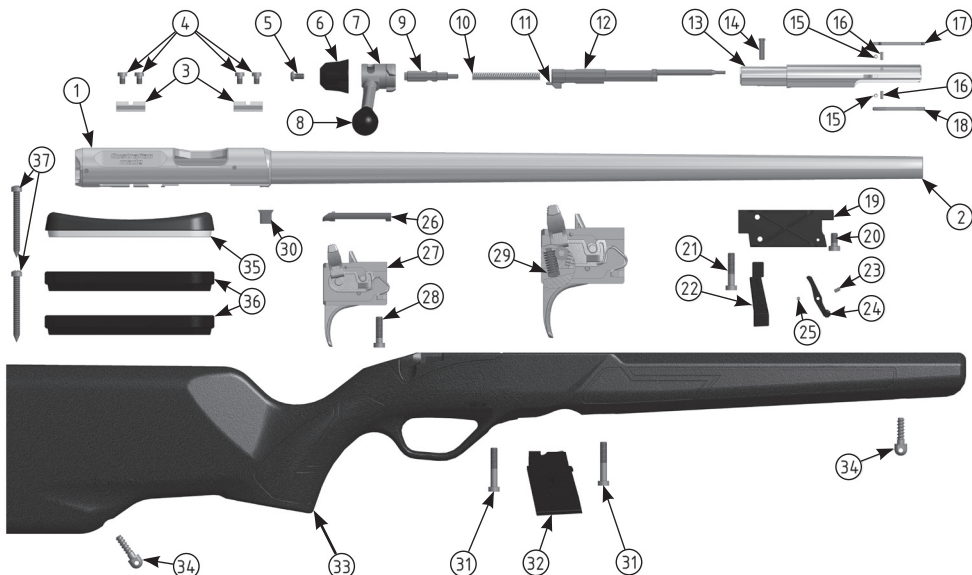
Starting in 1912 as a factory that made and supported firearms designed elsewhere, Lithgow has now evolved into an internationally recognised designer and manufacturer of small arms for both military and civilian markets.

About this rifle

The Australian-made LA101 CrossOver is a rifle that is tough and versatile with modern tactical styling, outstanding accuracy and reliability. It is designed to excel at a variety of shooting disciplines and reflects the military weapons heritage of Lithgow Arms.

The stock is made from the same high strength reinforced nylon as the Australian Defence Force's Assault rifle and includes an integral trigger guard and length of pull adjustability. The military grade barrel is cold hammer forged and the action is hardened high tensile steel to ensure long life and precision performance — all manufactured and tested at Lithgow.

Exploded View and Parts List



No.	QTY	DESCRIPTION	ITEM
1	1	RECEIVER	38201-1
2	1	BARREL, .22 LR, 1:16	38111-1
3	2	BASE, SIGHT	38203-1
4	4	SCREW, CAP M4x6L	38016-1
5	1	SCREW, BUTTON M4x8L	38416-1
6	1	SHROUD, BOLT, RH	38414-1
7	1	HANDLE, BOLT, RH	38411-1
8	1	KNOB, BOLT	38413-1
9	1	PIN, RETAINING, FIRING PIN	38424-1
10	1	SPRING, FIRING PIN	38423-1
11	1	INDICATOR, FIRING PIN	38425-1
12	1	ASSEMBLY, PIN FIRING RH	38431-1
13	1	BOLT	38410-1
14	1	PIN, RETAINING, BOLT HANDLE	38421-1
15	2	SPRING, EXTRACTOR	38419-1
16	2	PIN, SPRING, DIA2x6L	38420-1
17	1	EXTRACTOR, SECONDARY	38418-1
18	1	EXTRACTOR, PRIMARY	38417-1
19	1	WELL, MAGAZINE	38511-1
20	1	SCREW, CAP M5x10L	38018-1
21	1	SCREW, LOW, CAP M5x25L	38019-1
22	1	ADAPTER, MAGAZINE, .22LR	38512-1
23	1	SPRING, LATCH, MAGAZINE	38516-1
24	1	LATCH, MAGAZINE	38514-1

No.	QTY	DESCRIPTION	ITEM
25	1	PIN, STRAIGHT, DIA2.5x14L	38515-1
26	1	ANTI ROTATING PLATE	38202-1
27	1	TRIGGER ASSEMBLY, RH	38300-1
28	1	SCREW, LOW, CAP M5x20L	38015-1
29	1	SPRING, TRIGGER, MEDIUM	38314-1
30	1	LUG, RECOIL	38204-1
31	2	SCREW, CAP M5x30L	38014-1
32	1	MAGAZINE ASSEMBLY 5RD	38550-1
33	1	STOCK RH	38611-1
34	2	STUD, SLING	38616-1
35	1	PAD, RECOIL	38612-1
36	2	SPACER, BUTT	38614-1
37	2	SCREW, RECOIL PAD	38618-1
SPARES LIST			
DESCRIPTION	INCLUDES	ITEM	
SIGHT BASE KIT	3,4	38205-1	
BOLT PLASTICS KIT	5,6,8	38435-1	
SPRING, FIRING PIN	10	38423-1P	
FIRING PIN KIT	9,10,12,14	38429-1	
EXTRACTOR KIT	15,16,17,18	38436-1	
MAGAZINE WELL KIT	19,20,21,22,23,24,25	38555-1	
TRIGGER KIT	27,28	38301-1	
SPACER BUTT	36	38614-1P	
SCREW KIT	4,5,20,21,28,30,31,37	38620-1	
MAGAZINE ASSEMBLY 5RD	32	38550-1P	

Owner's Manual

For your safety and the safety of others, please read the following instructions carefully before you use your CrossOver rifle. **If you have little or no experience in handling or operating a firearm, we strongly suggest you do a certified firearms safety training course!**

Handling your rifle

- **Always** check that your rifle is unloaded by removing the magazine, opening and pulling back the bolt, looking into the chamber to ensure it is clear
- **Always** handle your rifle as if it was loaded
- **Always** keep and carry your rifle in the unloaded condition
- **Always** positively identify your target and be sure that there is a safe backstop before you shoot
- **Always** wear ear and eye protection when shooting your rifle
- **Always** keep your finger away from the trigger until you are aiming at a target and ready to shoot
- **Always** keep clear — and keep others clear — of the ejection port
- **Always** use clean, dry, high quality, commercially manufactured ammunition that is appropriate for the calibre of your rifle
- **Always** check for any obstruction in the barrel before loading
- **Always** use snap caps to dry fire your rifle
- **Never** point your rifle at anything you don't intend to shoot
- **Never** leave your rifle unattended or where it could be handled by an unauthorised person or child
- **Never** lean or rest your loaded rifle against an object- it could easily topple and discharge causing serious injury or death
- **Never** assume a rifle is unloaded. Always clear your rifle before handing it to another. If any one hands you a rifle, don't take their word for it, personally clear it before further handling
- **Never** drink alcohol or take drugs before or during shooting as your vision, coordination and judgement could be seriously impaired
- **Never** shoot at a hard surface such as a rock, or a liquid surface such as water, or discharge your rifle near flammable material
- **Never** use your rifle if it fails to function properly and never force a jammed action
- **Never** roughly handle or drop your rifle. If you do so, unload it and inspect for damage. If unsure, have it examined by a qualified gunsmith before use.

Before Use

- **Always** clean your barrel with a dry patch passed through the bore from breech to muzzle
- Wipe excess oil from the receiver, bolt and breech area
- Apply a small amount of lubricant to bolt body and lugs
- Insert the bolt into the action by simultaneously depressing the trigger and pushing the aligned bolt forward. The bolt is removed in the same manner
- Attach optical sight to the mounts provided (follow the manufacturer's instructions for installation and use)
- Adjust the length of pull by removing screws (37) and inserting/removing spacers (36)
- Your rifle is now ready for sighting-in and test firing.

Operating your rifle

• Loading the rifle:

- » fit a magazine containing live rounds. **WARNING! Only cartridges with the same calibre designation as marked on the rifle barrel can be used**
- » open the action by lifting the bolt handle completely and pulling the bolt fully to the rear
- » push the bolt fully forward, feeding a round from the magazine into the chamber
- » rotate the bolt completely down to close and cock the action. A red cocking indicator (11) at the rear of the bolt shows when the rifle is cocked
- » apply the safety by pulling the safety catch rearwards (red dot on receiver not visible). Note: the safety catch can only be placed on Safe when the rifle is cocked.

• Firing the rifle:

- » point the rifle toward the target
- » disengage the safety by pushing the safety catch forward (red dot on receiver is visible)
- » aim the rifle
- » squeeze the trigger.

• Unloading the rifle:

- » remove and empty the magazine
- » engage safety if rifle is cocked
- » open the action by lifting the bolt handle completely and pulling the bolt fully to the rear. Ensure live round or spent case has been ejected- ensure bolt face is clear- and chamber is empty
- » de-cock the bolt by, 1. rotate the bolt handle completely down when at rear (open action de-cock), or 2. disengage the safety, push the bolt fully forward- ensure magazine is not fitted- then rotate the bolt handle completely down while simultaneously pulling the trigger (closed action de-cock). Warning! Do not perform a closed action de-cock on a loaded rifle. This is an unsafe condition, as the firing pin would be in direct contact with the chambered cartridge. An impact on the bolt could then cause the rifle to fire un-intentionally without the trigger being pulled.

Cleaning and maintaining your rifle

- **Always** unload your rifle before cleaning and maintenance
- Remove the bolt, clean off excessive oil, dust and carbon residue then lightly oil. For security, store the bolt separately from your rifle
- When storing your rifle for short periods, an oily patch passed through the bore from breech to muzzle is all that is needed to prevent corrosion. For longer periods of storage, a more thorough cleaning to remove all carbon residue, followed by light oiling is recommended
- A gun cleaning solvent can be used to remove excessive fouling/carbon residue
- Clean all external metal surfaces with a lightly oiled cloth to prevent corrosion
- If your rifle has been exposed to rain, snow or salt spray, thoroughly wipe the bore and all metal surfaces and apply a new film of oil. In the case of heavy exposure, stock removal may be necessary. Upon re-assembly, torque screws (31) evenly to 1.5Nm
- Due to its synthetic nature, there is no need for stock maintenance.

Bolt Maintenance

It is not generally necessary to disassemble the rifle bolt, but if it feels sticky/stiff during operation, the bolt may require internal cleaning. To do this:

- Ensure you are wearing safety glasses
- Remove bolt from rifle
- Remove screw (5) then shroud (6)
- De-cock bolt by rotating bolt handle down
- Using thumb, push pin (9) in while simultaneously removing pin (14). Release pin (9) under control to relax spring (10) and remove both components, inspect, clean and lightly oil
- Carefully remove firing pin assembly (11,12), inspect, clean and lightly oil. Care should be taken to prevent breakage of red indicator pin (11)
- Separate bolt handle and bolt, inspect, clean and lightly oil
- Reassemble bolt in reverse order and tighten screw (5) to 2Nm.

Trigger/Safety

The Safety is a two position lever type. When in the Safe position it locks the trigger to prevent firing if the trigger is pressed inadvertently, but should not be relied upon to prevent accidental discharge from other causes such as rough handling or dropping on a hard surface.

During routine maintenance and inspection ensure that the screw retaining trigger item(28) is torqued to 7Nm

Storing your rifle

- Store your rifle in a clean, dry environment
- Store and secure your rifle and ammunition separately in accordance with statutory state or territory laws
- Store your rifle and ammunition out of the reach and sight of children.

Specifications

ITEM	SPECIFICATIONS
Rifle	Overall length 977-1007mm (38.5"-39.6"); Weight 3.1kg (6.8lb)
Barrel	Length 531mm (20.9"); Twist 1:16" 405mm (.22lr)
Trigger	Single Stage set at approximately 1.5kg
Safety	Two position - Safe/Fire (bolt can be opened on Safe). Indicator on Bolt shows cocked condition.
Stock	Adjustable for length of pull (325, 335, 345 and 355mm).
Magazine	5 Round Capacity
Coating	Cerakote H Series
If you have any questions or concerns about your rifle, please contact your Dealer or Lithgow Arms.	

Disclaimer

Please examine the rifle carefully prior to purchase to ensure it is undamaged. This rifle was tested, inspected and carefully packed before it left the factory. Lithgow Arms is not responsible for any product damage due to handling after the rifle has left our factory or for any unauthorised or improper use. Lithgow Arms reserves the right to modify the build standard and specification without notice in support of its continuous improvements activities.

WARNING!

Modifications and Repairs

Do not attempt to make modifications or repairs to your rifle unless you have the necessary knowledge, training, skill and equipment, and are prepared to take full responsibility for the consequences. Modifications or repairs that are unwisely undertaken or improperly performed can render a rifle unsafe, and lead to someone's death or injury. Lithgow Arms will not be responsible for any malfunction, injury or damage resulting from the alteration or substitution of any part of this rifle or for any repair performed by anyone other than ourselves.

Lithgow Arms Manufacturing Warranty for CrossOver rifle

1. Consumer guarantees under Australian Consumer Law

Our CrossOver rifle comes with guarantees that cannot be excluded under the Australian Consumer Law. You are entitled to a replacement or refund for a major failure and compensation for any other reasonably foreseeable loss or damage. You are also entitled to have the goods repaired or replaced if the goods fail to be of acceptable quality and the failure does not amount to a major failure.

2. Lithgow Arms warranty

In addition to consumer guarantees under Australian Consumer Law, we will repair all defects in material and workmanship that occur to your CrossOver rifle in the first 12 months after the date you purchase your CrossOver rifle (**Warranty Period**).

Our warranty will not apply, to the extent permitted under Australian Consumer Law, where Lithgow Arms identifies in its own discretion that:

- You have used the CrossOver rifle for a purpose for which it was not designed.
- You have not operated or maintained your CrossOver rifle in accordance with the operations manual enclosed with your CrossOver rifle.
- You have caused the defect by modifying, enhancing or making additions of non-Lithgow Arms parts or accessories to your CrossOver rifle.
- You have dismantled or disassembled your CrossOver rifle not in accordance with the operations manual enclosed with your CrossOver rifle.
- You have not stored your CrossOver rifle in accordance with our recommended instructions or in a suitable environment.
- Your CrossOver rifle has incurred normal fair wear and tear, which occurs when using or handling the CrossOver rifle for its usual purpose.
- You have not registered your CrossOver rifle with Lithgow Arms in accordance with clause 3.
- You have not made a claim to Lithgow Arms under this warranty during the Warranty Period.
- You have not returned or delivered your CrossOver rifle in accordance with our instruction under clause 4.

3. Product registration

To activate the warranty under clause 2, you must register your CrossOver rifle at www.LithgowArms.com during the Warranty Period. You must also ensure you have provided all mandatory information requested by us for product registration.

4. Making a warranty claim

To make a warranty claim, you must contact +61 (0)2 6352 9900 or info@LithgowArms.com and follow our instructions for the return, shipment and repair of your CrossOver rifle.



LITHGOW ARMS BATTLE PROVEN SINCE 1912

Lithgow Arms, 4 Martini Parade, Lithgow, NSW 2790, Australia

Tel: +61 (0)2 6352 9900

Email: info@LithgowArms.com

Web: www.LithgowArms.com

Thales Australia Limited trading as Lithgow Arms. ABN 66 008 642 751